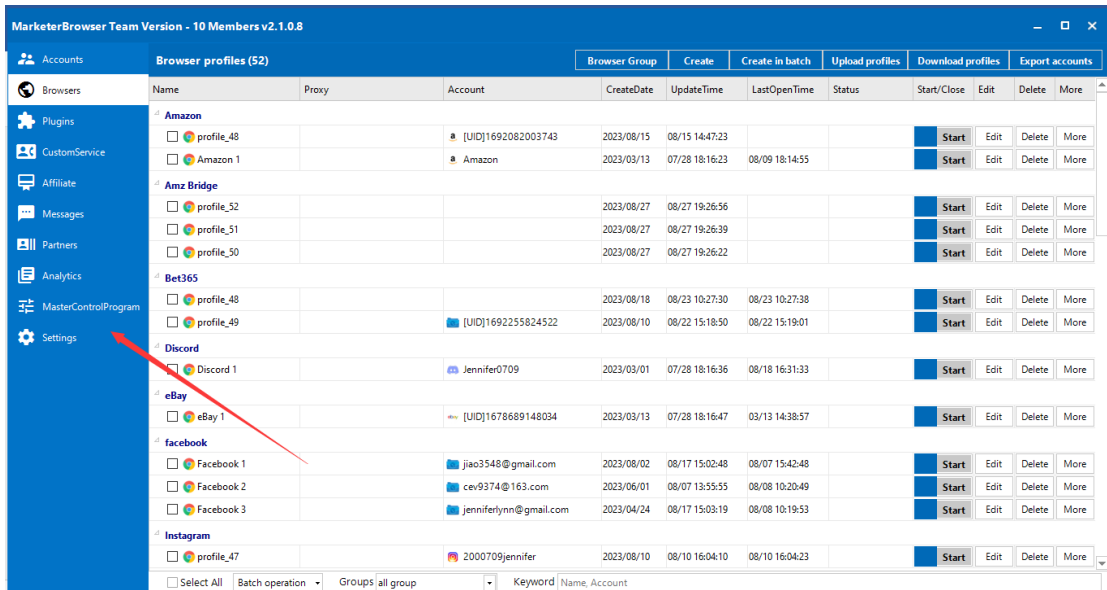
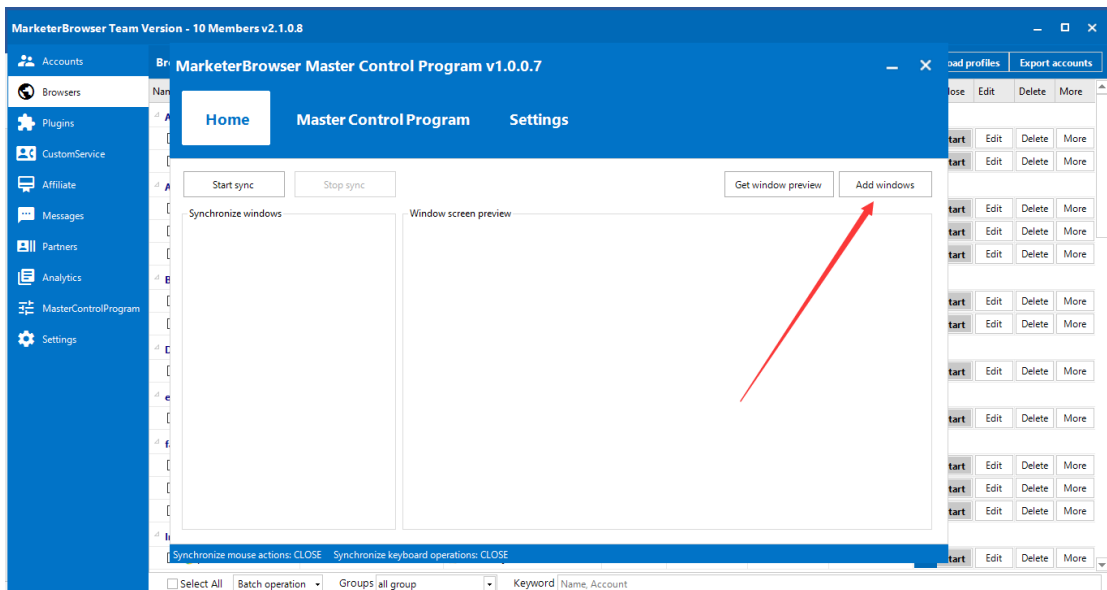


The Master Control Program Tutorial

1. **Step 1:** Click “Master Control Program” to open this function.



2. **Step 2:** Click “Add Windows” to add the windows you want to control at one time.



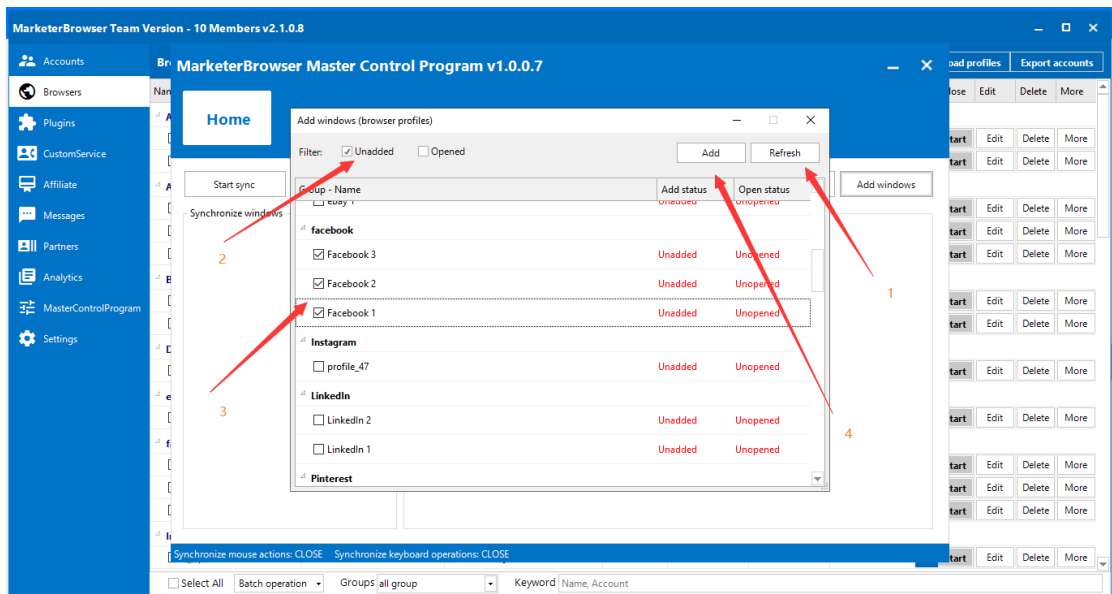
3. **Step 3:** First of all, click “Refresh” to get all the windows you added on MarketerBrowser.

Then choose “Unadded”, which means the windows that do not be added in the function of the Master Control Program.

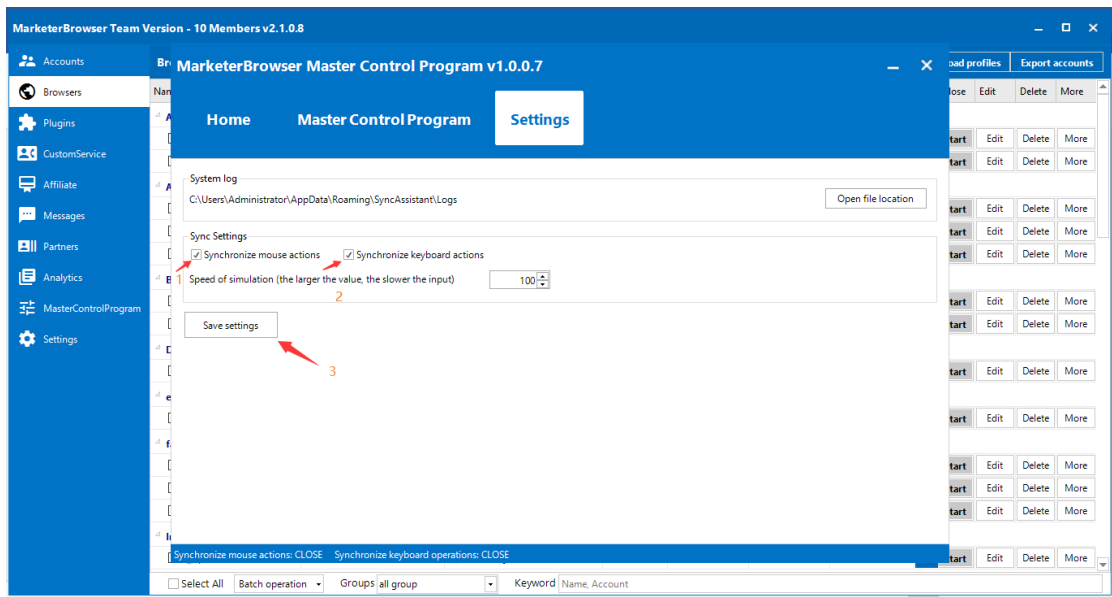
If you want to control the windows you opened on MarketerBrowser right now, please choose “Opened”.

Then select the windows that you want to control in one click.

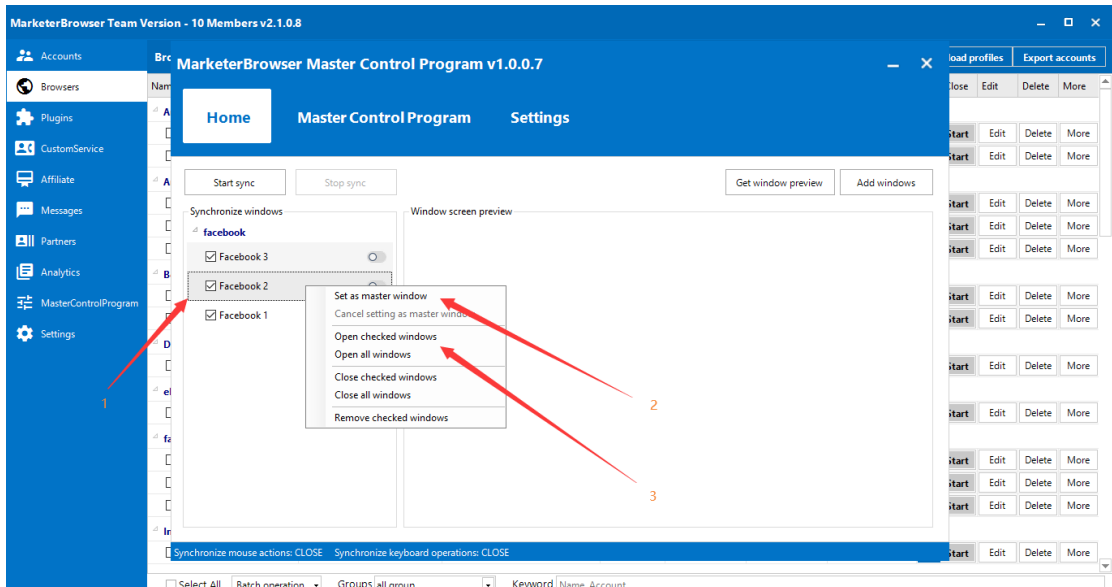
The last, click “Add”.



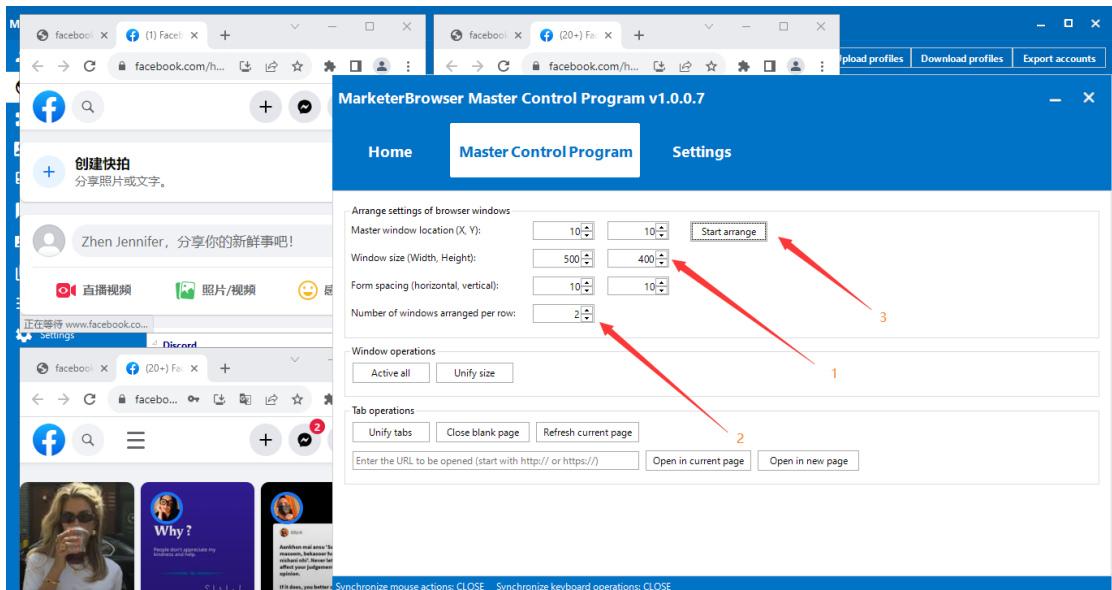
4. **Step 4:** Go to the button of “Settings”.
 Select the choice of “Synchronize mouse actions” and “Synchronize keyboard actions”.
 Then, click “Save settings”.



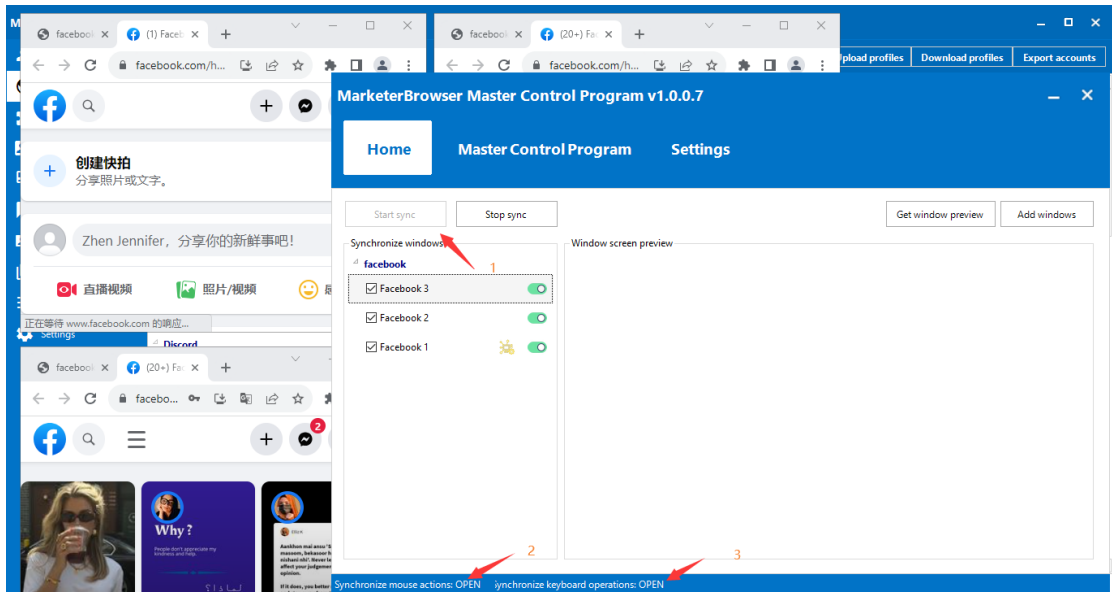
5. **Step 5:** Go back to the “Home” button.
 First of all, select all the windows you want to control this time.
 Right-click to choose one of them as your master window, which means once you have any operations on the master windows, other windows will follow it.
 Secondly, right-click to choose “Open checked windows”.



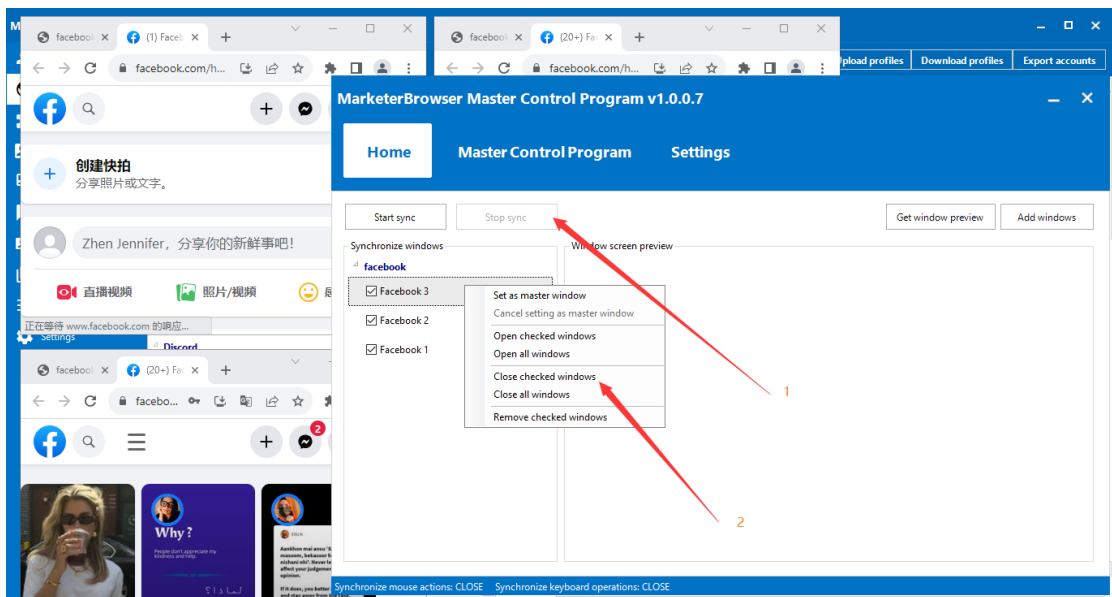
6. **Step 6:** Go to the “Master Control Program” button.
 Set the appropriate length and width for the windows you opened, and set the number of windows arranged per row. If you choose 2, it will be shown like the picture below.
 Then, click “Start arrange”, and all the windows will become the same length and width.



7. **Step 7:** Return to the “Home” button to click “Start sync”.
 Now you can begin to use the function of the Master Control Program. The window on the upper left corner is your master window, please use your mouse and keyboard here.
 (Tips: Before starting sync, please check the status of the mouse and keyboard that are opened, like for example in the picture.)



8. **Step 8:** At last, if you want to stop sync, please directly click the button “Stop sync”. Then right-click to choose “Close checked windows”.



That’s the manual about the function of the Master Control Program.
 If there is anything that needs help, please feel free to contact us.
 We will do our best to help you solve your problem.